

Quarzolite HF Plus

Acrylic paint with granular quartz fillers for the hygiene of walls in internal and external applications

DURABLE WITH FILLING PROPERTIES

RESISTANT TO MOULD AND ALGAE



WHERE TO USE

Painting all types of new, old and painted surfaces to provide an attractive, textured, durable, matt finish with long-lasting protection against aggressive environmental conditions and direct sunlight. Recommended as a finish for walls where the surrounding conditions are favourable for the growth of algae, mould and mildew.

Some application examples

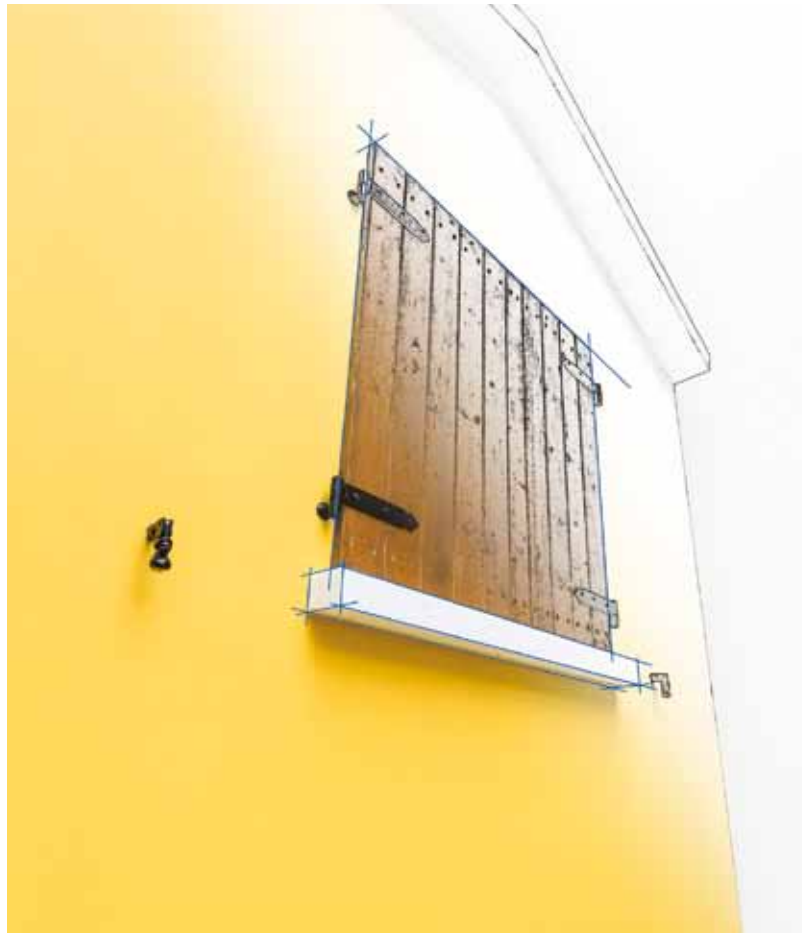
- Painting old and new, well-cured cementitious and lime-based render as long as it is cohesive, well adhered to the substrate and has no flaking or crumbling areas.
- Painting over old paintwork, old plastic and mineral coatings if well adhered to the substrate.
- Painting façades damaged by algae and mould.
- Painting north-facing façades.
- Painting internal rooms where mould is present.

TECHNICAL CHARACTERISTICS

Quarzolite HF Plus is a paint for the hygiene of walls, made from acrylic resin in water dispersion and granular quartz fillers for internal and external walls.

Quarzolite HF Plus is resistant to all climatic conditions and aggression from smog, saltwater and direct sunlight. It forms a protective coat on substrates that remains durable for many years.

Once applied, **Quarzolite HF Plus** forms an even,



Quarzolite HF Plus



Façade damage
by mould



Façade repaired with
Quarzolite HF Plus



Application of
Silancolor Cleaner Plus

lightly-textured coating that covers small imperfections in the substrate.

Quarzolite HF Plus is particularly resistant to the growth of algae, mould and mildew. It may be used to paint walls that have already been damaged by such microorganisms after cleaning and removing them from the surface, or to prevent them forming by painting buildings in areas where the particularly damp climate encourages their growth. A typical example is painting north-facing façades which are particularly sensitive to the growth of algae due to the walls of the building being colder and damper.

Quarzolite HF Plus used in combination with **Silancolor Primer Plus** and, where necessary, with **Silancolor Cleaner Plus**, forms an efficient, long-lasting protective system for surfaces.

Quarzolite HF Plus adheres perfectly to all types of render and to old, well adhered paint after treating them with **Silancolor Primer Plus**, **Malech** or **Quarzolite Base Coat**.

Quarzolite HF Plus is available in a wide range of colours created using the **ColorMap®** automatic colouring system.

RECOMMENDATIONS

- Do not apply **Quarzolite HF Plus** on damp substrates or on substrates which are not well cured.
- Do not apply **Quarzolite HF Plus** on de-humidifying renders.
- Do not apply **Quarzolite HF Plus** directly on surfaces where algae, mould or mildew are present. Remove beforehand with **Silancolor Cleaner Plus** and treat surfaces with **Silancolor Primer Plus**.
- Do not apply **Quarzolite HF Plus** if the temperature is lower than +5°C or higher than +35°C (surfaces must always be dry and must never be exposed to direct sunlight).
- Do not apply **Quarzolite HF Plus** if the level of humidity is higher than 85%.
- Do not apply **Quarzolite HF Plus** if it is about to rain or in windy weather.

Refer to the "SAFETY INSTRUCTIONS FOR PREPARATION AND APPLICATION" section.

APPLICATION PROCEDURE

Preparation of the substrate

New surfaces to be painted and areas patched up with repair mortar must be well-cured, perfectly clean, cohesive and dry. Remove all traces of oil and grease from the surface and any loose material. Remove algae, mould and mildew from surfaces while they are still damp after thoroughly cleaning them with **Silancolor Cleaner Plus**.

Apply **Silancolor Cleaner Plus** over the surface of the substrate with a low-pressure

manual sprayer or by brush, making sure it penetrates deep down into the substrate; wait a few minutes while it reacts.

Remove the algae, mould and mildew with a stiff brush.

Repeat this operation several times if necessary making sure **Silancolor Cleaner Plus** penetrates deep down into the substrate.

Seal all cracks and repair any damaged or deteriorated areas.

Seal surface pores and level off uneven areas on the substrate with mortar and smoothing compound from the MAPEI Building Products line.

Apply **Silancolor Primer Plus**, **Malech** or **Quarzolite Base Coat** on the dry, cured substrate and after 12-24 hours apply **Quarzolite HF Plus**.

Preparation of the product

Dilute **Quarzolite HF Plus** with 10%-15% of water, making sure that it is thoroughly blended. Use a drill at low-speed for blending if necessary.

When preparing only partial quantities, we recommend mixing **Quarzolite HF Plus** as is in its original container before pouring off the quantity required.

Application of the product

Apply **Quarzolite HF Plus** using traditional methods such as by brush, roller or air-spray over the dry **Silancolor Primer Plus**, **Malech** or **Quarzolite Base Coat**.

The protection cycle comprises the application of at least two coats of **Quarzolite HF Plus** allows 24 hours between each coat under normal conditions.

Cleaning

Wash brushes, rollers and spray equipment with water before **Quarzolite HF Plus** dries.

CONSUMPTION

Consumption is heavily influenced by the absorption and roughness of the substrate, the colour applied and the tools used for applications. Under normal conditions, consumption is generally 0.35 ÷ 0.45 kg/m² (for two coats of product).

PACKAGING

Quarzolite HF Plus is supplied in 20 kg plastic drums.

STORAGE

24 months if stored in a dry place away from sources of heat at a temperature of +5°C to +30°C. Protect from frost.

SAFETY INSTRUCTIONS FOR PREPARATION AND APPLICATION

Quarzolite HF Plus is not considered dangerous to the current regulations regarding the classifications of mixtures. It is recommended to use protective gloves and goggles and to take the usual precautions for handling chemicals.

If the product is applied in closed areas make sure they are well ventilated.

TECHNICAL DATA (typical values)

PRODUCT IDENTITY

Consistency:	thick liquid
Colour:	white, from the MAPEI colour chart range or in various colours obtained using the ColorMap® automatic colouring system
Density (EN ISO 2811-1) (g/cm³):	approx. 1.58
Dry solids content (EN ISO 3251) (%):	70

APPLICATION DATA

Dilution rate:	10-15% of water
Waiting time between each coat:	at least 24 hours under normal humidity and temperature conditions, and only when the previous layer is completely dry
Application temperature:	+5°C to +35°C
Consumption (kg/m²):	0.35-0.45 (in 2 coats)

FINAL PERFORMANCE

VOC content of ready-mixed product white (European Directive 2004/42/EC) (g/l):	≤ 10
VOC content of ready-mixed product coloured (European Directive 2004/42/EC) (g/l):	≤ 20
Change in colour after 1,000 hours exposure to a weathermeter (according to ASTM G 155 cycle 1) white:	ΔE < 1
Change in colour after 1,000 hours exposure to a weathermeter (according to ASTM G 155 cycle 1) grey:	ΔE < 1
Vapour resistance for a 0.15 mm thick dry layer S_D (EN ISO 7783) (m):	0.09
Capillary action water absorption coefficient W₂₄ [kg/(m²·h^{0.5})] (EN 1062-3):	0.52



Application of the primer (preferably Silancolor Primer Plus)



Application of Quarzolite HF Plus



Detail of the high covering power of Quarzolite HF Plus

Quarzolite HF Plus

For further and complete information about the safe use of our product please refer to the latest version of our Material Safety Data Sheet.

PRODUCT FOR PROFESSIONAL USE.

WARNING

Although the technical details and recommendations contained in this product data sheet correspond to the best of our knowledge and experience, all the above information must, in every case, be taken as merely indicative and subject to confirmation after long-term practical application; for this reason, anyone who intends to use the product must ensure beforehand that it is suitable for the envisaged application. In every case, the user alone is fully responsible



for any consequences deriving from the use of the product.

Please refer to the current version of the Technical Data Sheet, available from our website www.mapei.com



Our Commitment To The Environment
MAPEI products assist Project Designers and Contractors create innovative LEED (The Leadership in Energy and Environmental Design) certified projects, in compliance with the U.S. Green Building Council.

All relevant references for the product are available upon request and from www.mapei.com

