



Image shown may not reflect actual configuration

## Cat® EMCP 4.4 Generator Set Master Controller

### EGP Configuration

Caterpillar is leading the power generation marketplace with power solutions engineered to deliver unmatched flexibility, expandability, reliability, and cost effectiveness.

## General Description

The EMCP 4.4 master control panel is a wall-mounted system that monitors and controls up to ten (10) Cat® EMCP 4.4 equipped generator sets.

Together with the EMCP 4.4 generator set controllers, this cost-effective approach provides centralized, automatic controls and communications through an intuitive graphic interface.

## Features

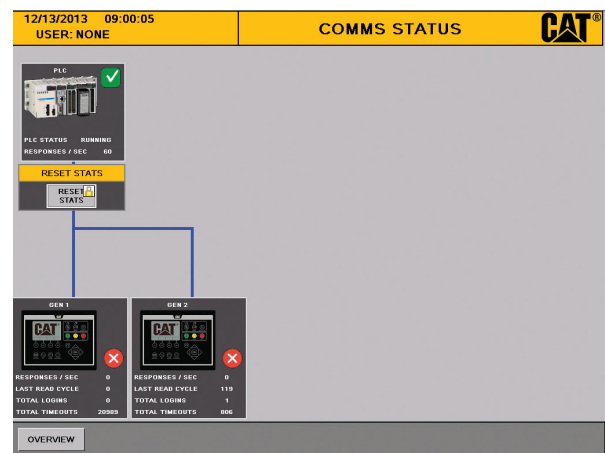
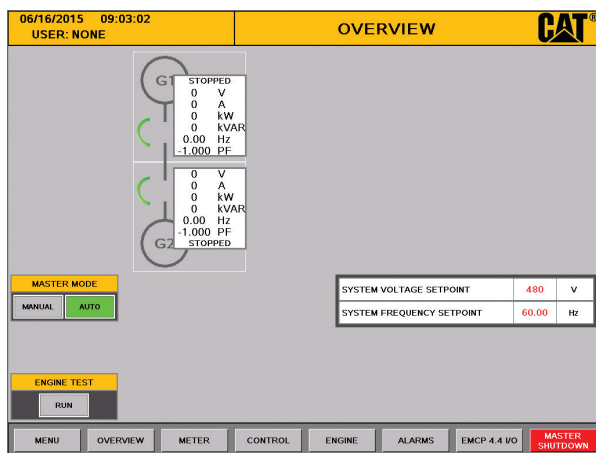
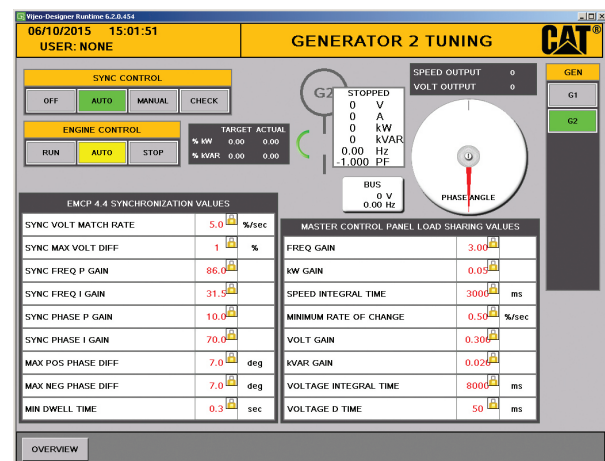
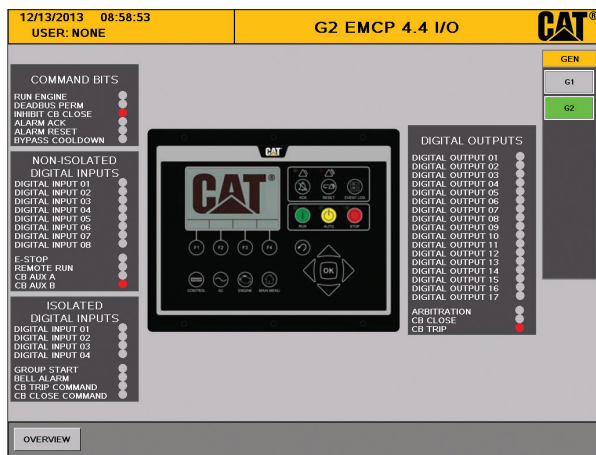
- 15" color, touchscreen operator interface
- Integral protective functions
- Annunciation and alarm history
- Selectable transition modes to and from generator power
- Selectable load sense/load demand mode to avoid unnecessary generator set operation and reduce fuel consumption
- Automatic load shed/load add control based on available capacity to prevent generator set overloading
- High-speed communications with individual EMCP 4.4 generator set controls provide the operator with control and data acquisition capability of each generator set from a centralized location
- Easy-to-follow, step-by-step installation and start-up instructions
- Password security system for user interface
- Interface capability with SCADA system
- Two-year standard Caterpillar warranty

## Operating Modes

- Emergency standby
- Load sense/load demand
  - Generator set priority or engine-hour balancing
  - Automatically matches on-line generator capacity to the loads
- Load shed/load add
  - Automatic or manual load shed up to eight (8) stages
- No load test mode

## User System Requirement

- All Cat diesel engine generators are required to be packaged with EMCP 4.4 configured for MGD
- The EMCP 4.4 master control panel requires an ethernet connection to the EMCP 4.4 generator control on each generator set



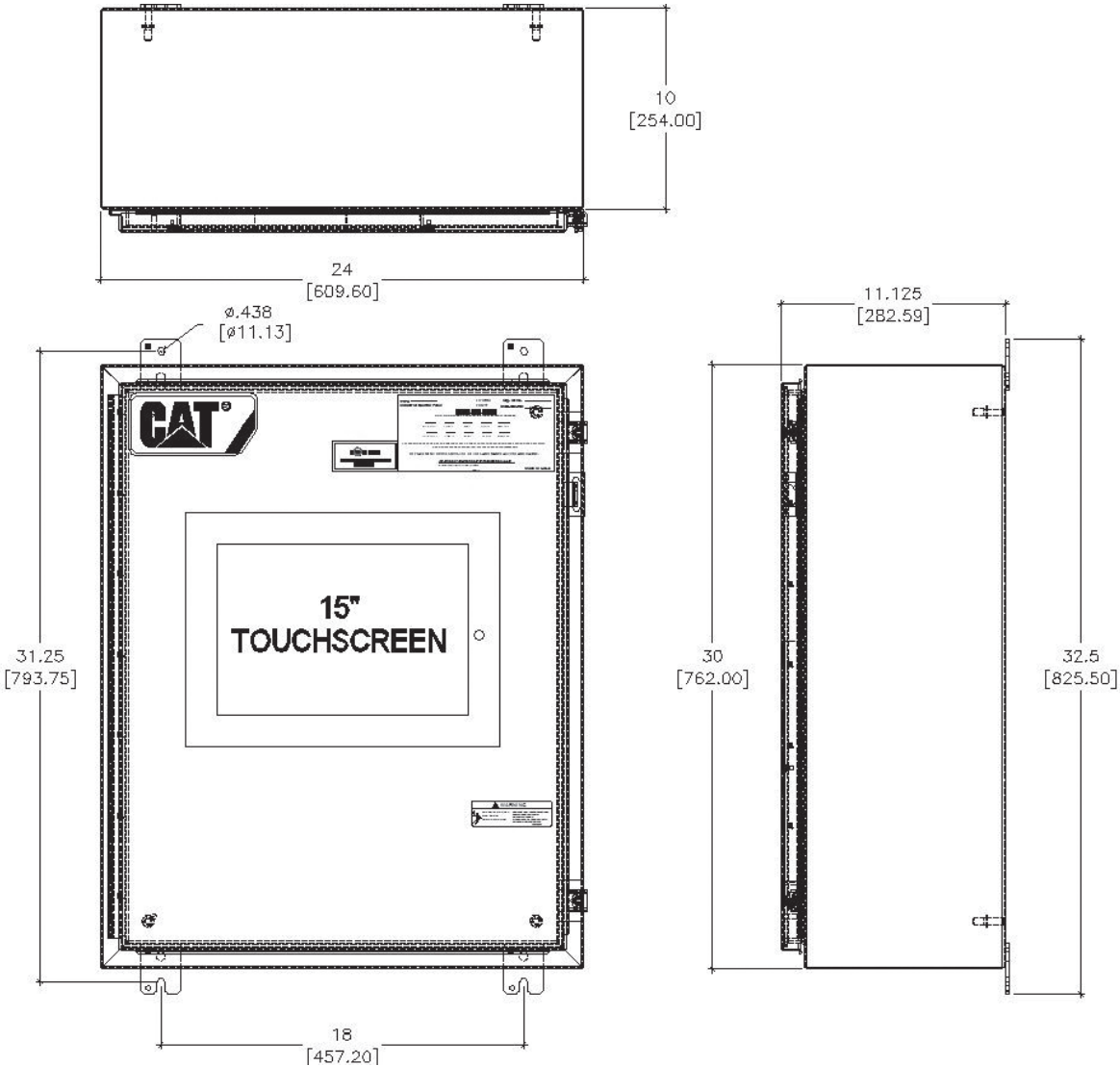
Images shown may not reflect actual configuration.

Images shown may not reflect actual configuration.

## Specifications

<b>Generator Sets Supported</b>	
Cat Engine-Generators	C9 ACERT™ - C32 ACERT, C175, 3500
System Capacity	2-10 Generator Sets
Voltage and Frequency	208V - 600V, 50/60Hz
<b>System Control Voltage</b>	
Control Relay Ratings	10A @ 110 VDC, 4A @ 225 VDC resistive
Control Voltage Nominal	24 VDC
Maximum Control Voltage Range	10-36 VDC
<b>SCADA Interface</b>	
Modbus RTU (RS 485) 2-wire	Standard feature
Modbus TCP (Ethernet)	Optional feature
<b>Environmental Parameters</b>	
Certifications	UL 508A/cUL, CSA, OSP-0165-10
Vibration and Shock	SDS(g) = 2.77, z/h = 1.0, Ip = 1.5
Humidity	10%-90% non-condensing humidity
Operating Temperature	0°C to 50°C
Storage Temperature	-10°C to +60°C
Control Panel Enclosure	NEMA 12 Type (IP52)
<b>Enclosure Dimensions &amp; Weights</b>	
	30H x 24W x 11.125 inches, 74 lbs. wall mount

Dimensions



[www.cat.com/powergeneration](http://www.cat.com/powergeneration)  
©2018 Caterpillar  
All rights reserved.

Materials and specifications are subject to change without notice. CAT, CATERPILLAR, their respective logos, ACERT, "Caterpillar Yellow", the "Power Edge" trade dress as well as corporate and product identity used herein, are trademarks of Caterpillar and may not be used without permission.