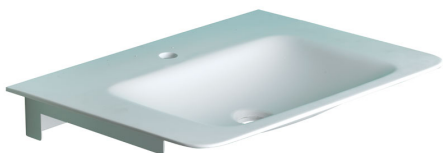


White acrylic stone rectangular console. This article can be customised on request as far as sizes and shapes. Particularly suitable for children school installation. The item is equipped with a white epoxy powder painted steel structure for wall fixing.



Code **B44CNM04** Series **Milk**

Net weight kg 5 Dimensions [WxDxH] mm 550x420x89

In use weight capacity Vertical kg

#### Use and installation info

Use Wall installation

#### Cleaning

Clean using pure water and home disinfectants which have been sufficiently diluted in water. Do not use abrasive detergents and trichloroethylene, oxygenated water or acetone-based solvents.

Fasteners Not included with the product

*Ponte Giulio suggest to use fasteners suitable to the wall characteristics on which the product will be installed.*

#### Packaging information

Type of package Wood packaging

Dimensions [WxDxH] mm Weight kg

#### Available colours

**W3** Alpine white



