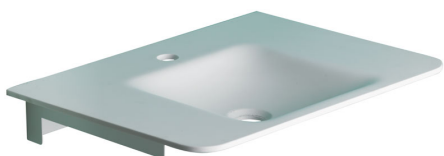


White acrylic stone rectangular console. This article can be customised on request as far as sizes and shapes. Particularly suitable for children school installation. The item is equipped with a white epoxy powder painted steel structure for wall fixing.



Code **B44CNM03** Series **Milk**

Net weight kg 5 Dimensions [WxDxH] mm 550x420x89

In use weight capacity Vertical kg

Use and installation info

Use Wall installation

Cleaning

Clean using pure water and home disinfectants which have been sufficiently diluted in water. Do not use abrasive detergents and trichloroethylene, oxygenated water or acetone-based solvents.

Fasteners Not included with the product

Ponte Giulio suggest to use fasteners suitable to the wall characteristics on which the product will be installed.

Packaging information

Type of package Wood packaging

Dimensions [WxDxH] mm Weight kg

Available colours

W3 Alpine white



