



staron®

Solid
Surfaces

LOTTE ADVANCED MATERIALS



STARON® AN ORIGINAL SOLID SURFACE MATERIAL

DURABILITY, COLOUR VARIETY,
DESIGN WITHOUT LIMITS

STARON®

STARON® Solid Surfaces is an acrylic-based material made of natural minerals. Just as decorative as natural stone, but with all the advantages of a solid surface material. As it is solid and non-porous, it can be processed three-dimensionally, offering planners and designers maximal freedom.

Although STARON® incorporates all important qualities of stone, it can be worked by carpenters in a similar way as hardwood. Unlike stone however, STARON® feels warm and pleasant to the touch.

With its many advantages and versatile application possibilities, STARON® is a convincing contribution to the private, commercial and medical sectors alike.



ROBUST AND DURABLE

- Easy maintenance and repairable
- Flame and shock resistant



HYGIENIC

- Non-porous and homogeneous
- Bacteria-resistant and easy to clean
- Resistant to harsh chemicals



FLEXIBILITY AND VARIETY

- Thermoformable and 3D-effects
- Organic and geometric design
- Perfectly suitable for use by carpenters



LIMITLESS COLOUR VARIETY

- 150 colours
- Reflection and depth-effect
- Supreme Collection offering stone, marble and concrete looks



FREE FROM JOINTS

- Glues together seamlessly and invisibly
- Soft and flawless to the touch
- Cast-like design



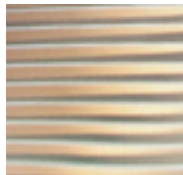
TRANSLUCENT

- Full-surface backlighting
- Variable luminosity
- Individual backlighting for logos and texts

PUBLIC BUILDINGS

01

National History Museum London, UK, Design and contractor: Paragon Creative, Photo: NHM London



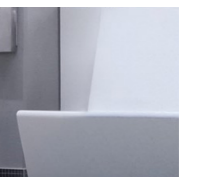
02

Berlin Olympic Stadion visitor centre, Design and photo: Akay von Oppen, Berlin



03

Indoor pool Blau-beuren, Gebhardt Architectural Offices, Contractor: Mohring, Photo: Webvisio Mediadesign



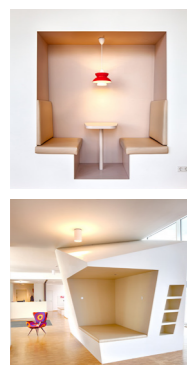
04

Warsaw Spire,
Warsaw, PL,
Design: Massive
Design, Contractor:
Krause, Photo:
Tadeusz Parcej



05

Student Residence
Milestone, Vienna,
AT, Josef Weichen-
berger Architects,
Photo: Studio
M. Eder



06

New Vienna Uni-
versity for Econo-
mics and Business
Administration, AT,
Zaha Hadid Archi-
tects, Contractor:
Joinery Scheschy,
Photo: Studio
M. Eder



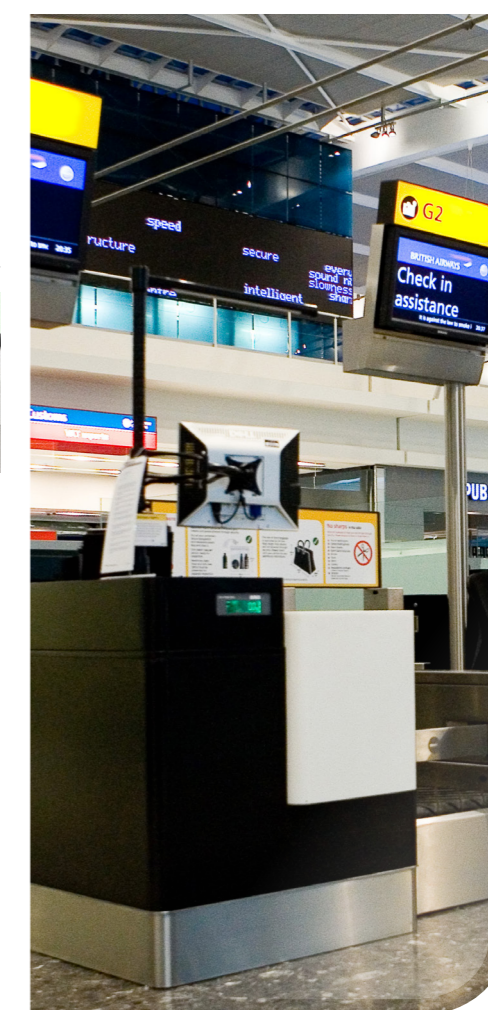
07

Edge Media Furni-
ture, Design and
photo: Peter Ken-
kel designed for
people, Holdorf



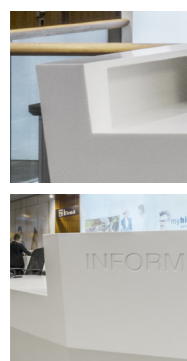
08

Heathrow Airport
Terminal 5,
London, UK,
Photo: Heathrow
Airport



09

Vienna Twin Towers, AT, Katharina Frösch & Hoppe Architects



Contractor: Joinery Scheschy, Photo: Pez Hejduk



SHOPFITTING

01

Optician, Contractor: Otto Ebersberger GmbH



02

Luxury Shop Lounge, Seoul, KOR



03

Heidi.com Fashion,
Neuchâtel, CH,
Design: Zaha
Hadid Architects,
Photo: Mathieu
Spohn



04

Health care supply
store Glotz in
Stuttgart, Design
and contractor:
Parkraum & Dill-
mann, Photo:
B. Matthiessen



05

Sportalm Shop,
Düsseldorf



06

Dessange Beauty Shop, Moskau, RUS, Design & Photo: Stanylsav Starykh



07

Kludi Forum, Menden, Design: db architekci, Contractor: Krause, PL, Photo: Oliver Pohl



08

Stuart Weitzman Shoe Shop, Athen, GR








HEALTHCARE SECTOR

01

Dental Centre,
Seoul, KOR



-  JOINT-FREE DESIGN
-  EASY MAINTENANCE
-  NON-POROUS MATERIAL
-  EASY TO CLEAN
-  DURABLE AND EASY-CARE
-  HOMOGENEOUS
-  NSF CHEMICALS AND STAIN RESISTANT
-  EXCELLENT QUALITY
-  FLEXIBILITY THROUGH FORM VARIETY
-  ENVIRONMENTALLY FRIENDLY CERTIFICATION

02

Barmherzige Schwestern Hospital, Linz, AT, Contractor: Joinery Scheschy, Photo: Studio M. Eder



03

Dentistry Am Staden 9, Saarbrücken, Design: Braun & Eyer & Okinlab, Photo: Studio Yaph Hakimi



04

medi - Centre for Medical Education, Bern, CH



05

Children's hospital Kepler University Clinic, Linz, AT, Contractor: Joinery Scheschy, Photo: Studio M. Eder



HOSPITALITY & RESTAURANTS

01

Marriott Renaissance Hotel
Barcelona Fira,
ESP, Ateliers Jean
Nouvel, Ribas &
Ribas, Photo:
A. A. Fuentes



02

Sheraton Grande
Walker Hill Hotel,
Seoul, KOR



03

Double Tree
Hilton Hotel,
Bucharest, ROU,
Design and photo:
Inpro Studio



04

Sushi La Bar & Grill Restaurant, Nicosia, CYP



05

Gallery Café, Queensland, AUS, Design by the Nosuchstudio collective, Photo: Austaron



06

Perfect Day® Coffeeshop, Frankfurt Airport, Terminal 1, Design and photo: 3deluxe Architects



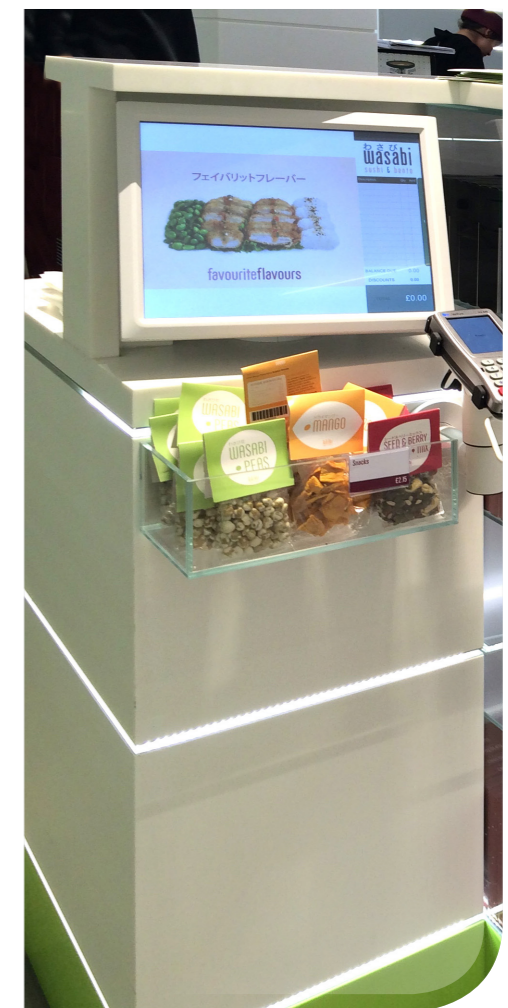
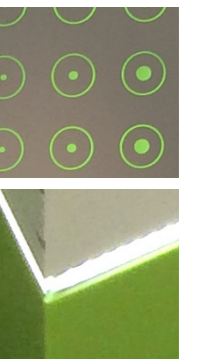
07

Adagio Club Berlin, Design: stories within architecture, Photo: Adagio



08

Wasabi Restaurant, London, UK





01

Private home,
Stuttgart, Design
and photo: Julia
Meisel, Archi-
tect; Contractor:
Mohring



02

Private kitchen,
Seoul, KOR



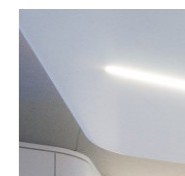
03

Private kitchen,
Bayreuth, Design
and contractor:
Bezold Interior
Construction,
Photo: M. Bursch



04

Private kitchen,
Aarau, CH,
Design and
photo: Lämmli
Architecture, CH



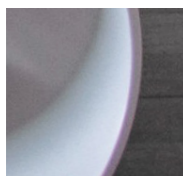
05

'Kus' crystal
private kitchen,
Niedersachsen,
Design and
photo: Mezzanin
Architects,
Vienna, AT



06

'Unique' sofa & 'Eight' table, Neuchâtel, CH, Design and photo: Identity Design, CH



07

Mikvah in Moscow, RUS, Design and photo: Alyona Franchan & Boris Matveyev, Faber Group



08

Double wash-basin, Bayreuth, Design: Becher & Partner, Contractor: Bezold Interior Construction, Photo: M. Bursch



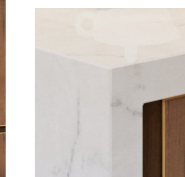
09

'Motive' Wash-basin, Victoria, AUS, Design and photo: Thomas Coward for Omvivo Kitchen



10

Private kitchen, Seoul, KOR



11

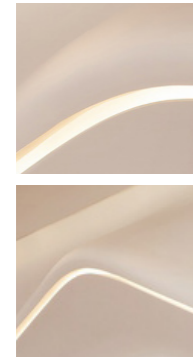
Private bathroom, Seoul, KOR



WALL DECORATION

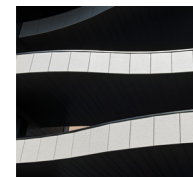
01

Sky Lounge,
Dongdaemun
Design Plaza &
Park, KOR, Design:
Zaha Hadid
Architects



02

Residenza Villa,
Lugano, CH,
Giussani &
Berther Archi-
tects, Photo:
Claudio Bader



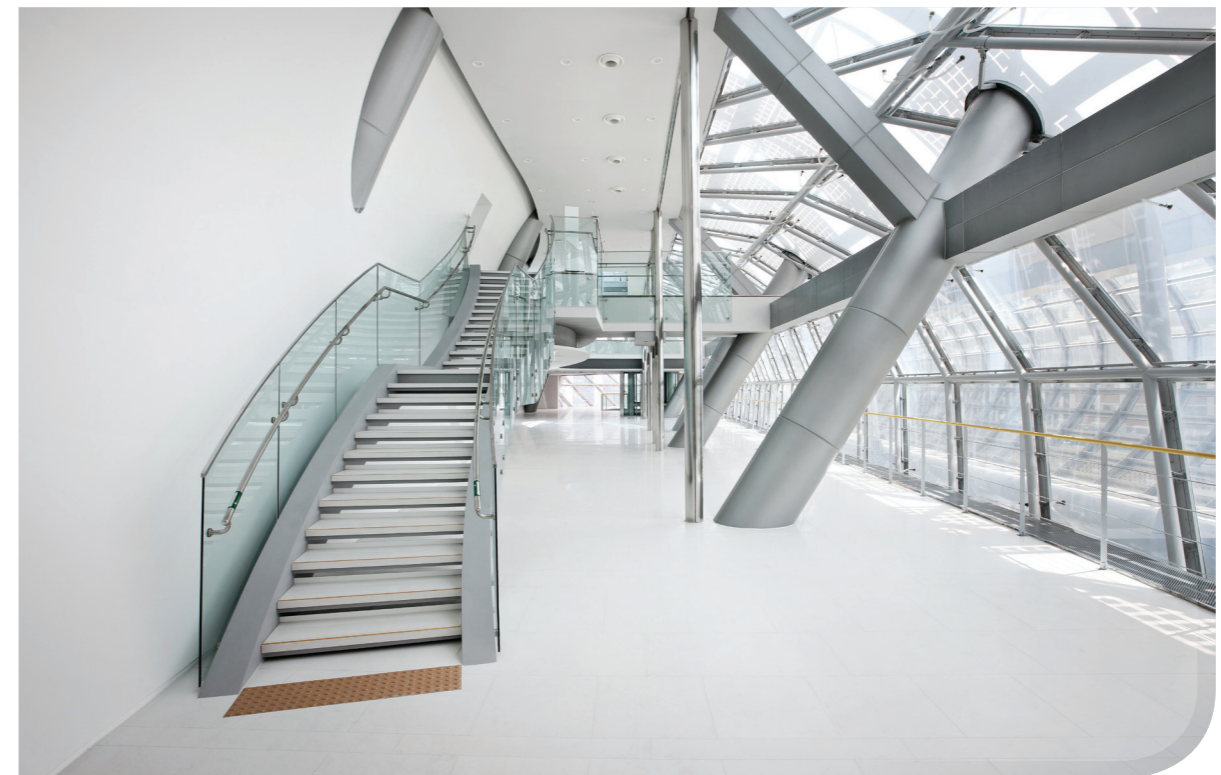
03

Hublot Shop,
Paris, FRA, Design
and photo:
Dietlin Artisans
Métalliers, CH



04

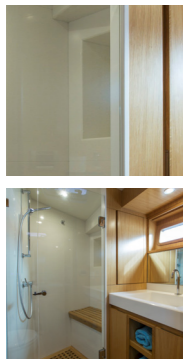
Seoul City Hall,
KOR



TRANSPORT

01

Buizen Yacht 52,
Hull 3, Design and
photo: Buizen
Yachts, AUS



02

RV Caravan,
KOR



03

Intercity PKP
Polska, InnoTrans
2016, Berlin,
Design: Pesa,
Contractor:
Krause, PL,
Photo: C. Kunze



04

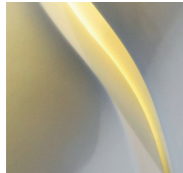
UniLux 2020,
InnoTrans 2016,
Berlin, Design:
Siemens AG, Con-
tractor and photo:
Krause & Railcom-
sys GmbH



ARTWORKS

01

Façade module
GDA 2016 –
Special Mention,
Design: Krause,
Photo: Jonas
Ratermann



02

'Odyssey' desk,
Design and
image: Massive
Design, PL



37

03

'Pebble' table, St.
Petersburg, RUS,
Design and photo:
Mikhail Belyaev for
Karat & STARON®
Russia



04

GL1A + GL1B
Sideboard, Design
and photo: Guy
Lafranchi Applied
Design, CH





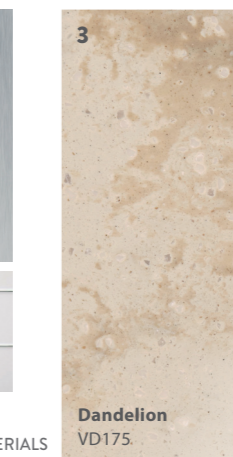

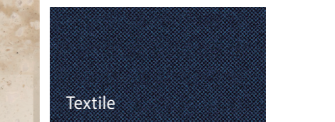




INSPIRATIONS

PUBLIC BUILDINGS

Lobbies and foyers are a company's and organisation's business card. The naturalistic decors and thermoform ability of the Supreme Collection ensure design versatility and flexibility in these areas.

<p>1</p>  <p>Magnolia VM143</p>	 <p>Wood Fibre</p>  <p>Leather</p> <p>RECOMMENDED COMBINATION OF MATERIALS</p>	<p>2</p>  <p>Natural Bridge VN144</p>	 <p>Wood Steel</p>  <p>Tiles</p> <p>RECOMMENDED COMBINATION OF MATERIALS</p>	<p>3</p>  <p>Dandelion VD175</p>	 <p>Wood Steel</p>  <p>Textile</p> <p>RECOMMENDED COMBINATION OF MATERIALS</p>
---------------------------------------------------------------------------------------------------------------------------------	-------------------------------------------------------------------------------------------------------------------------------------------------------------------------------------------------------------------------------------------------------------	---------------------------------------------------------------------------------------------------------------------------------------	-----------------------------------------------------------------------------------------------------------------------------------------------------------------------------------------------------------------------------------------------------------	----------------------------------------------------------------------------------------------------------------------------------	-------------------------------------------------------------------------------------------------------------------------------------------------------------------------------------------------------------------------------------------------------------


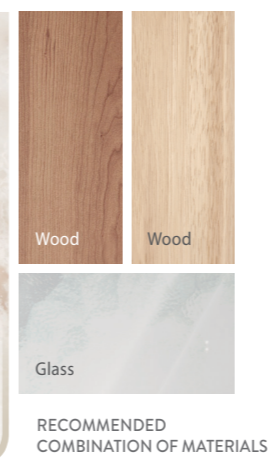
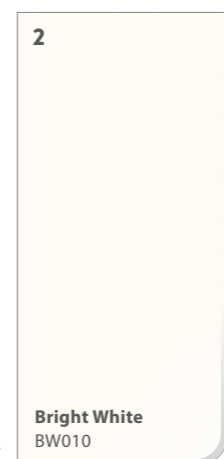
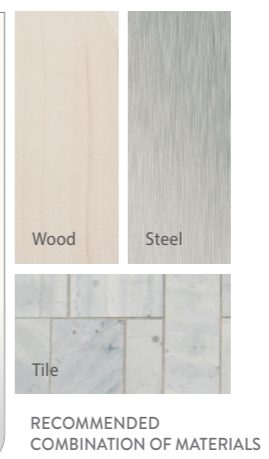

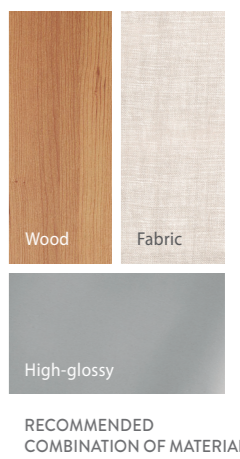


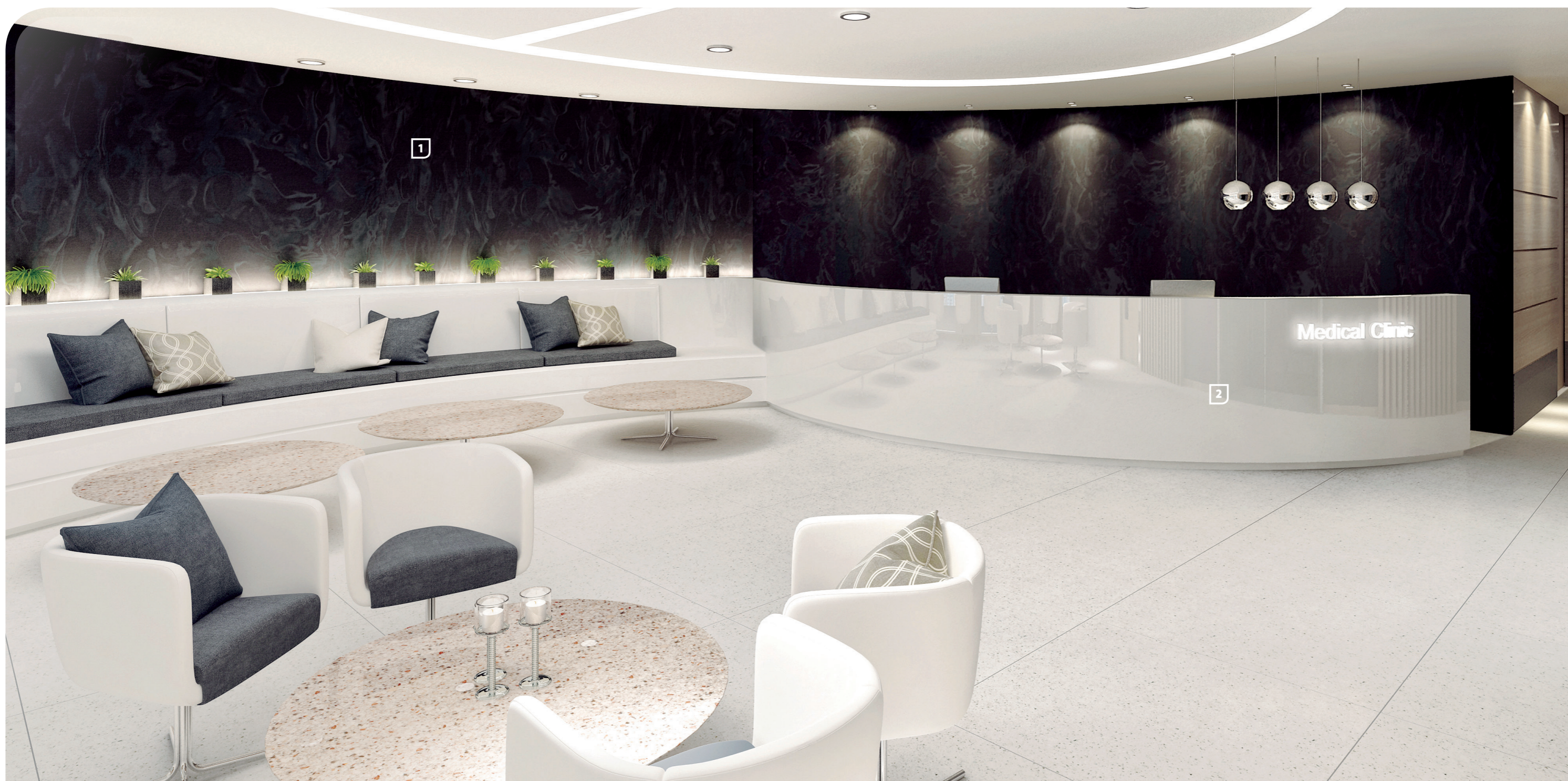


INSPIRATIONS

GASTRONOMY

STARON® is an ideal material for the hospitality and restaurant industries, adding a heightened recognition factor to interior design. The Supreme Collection's naturalistic colours ensure an exclusive, aesthetically pleasing look.

<p>1</p>  <p>Ocean View VO171</p>	 <p>Wood Wood</p> <p>Glass</p> <p>RECOMMENDED COMBINATION OF MATERIALS</p>	<p>2</p>  <p>Bright White BW010</p>	 <p>Wood Steel</p> <p>Tile</p> <p>RECOMMENDED COMBINATION OF MATERIALS</p>	<p>3</p>  <p>Presto VP159</p>	 <p>Wood Fabric</p> <p>High-glossy</p> <p>RECOMMENDED COMBINATION OF MATERIALS</p>
-----------------------------------------------------------------------------------------------------------------------------------	-----------------------------------------------------------------------------------------------------------------------------------------------------------------	-------------------------------------------------------------------------------------------------------------------------------------	-----------------------------------------------------------------------------------------------------------------------------------------------------------------	-------------------------------------------------------------------------------------------------------------------------------	-------------------------------------------------------------------------------------------------------------------------------------------------------------------------



INSPIRATIONS

HEALTHCARE SECTOR

STARON® is exceptionally suited for use as a joint-free and highly hygienic design and functional element. Clear and neutral colours enrich the sensitive clinical ambience with modern, contemporary design.

<p>1</p> <p>Presto VP159</p>	<p>Wood Glass</p> <p>Tiles</p> <p>RECOMMENDED COMBINATION OF MATERIALS</p>	<p>2</p> <p>Pure White SP016</p>	<p>Wood Steel</p> <p>Tiles</p> <p>RECOMMENDED COMBINATION OF MATERIALS</p>
------------------------------------------------	--------------------------------------------------------------------------------	----------------------------------------------------	--------------------------------------------------------------------------------



STARON® COLOURS

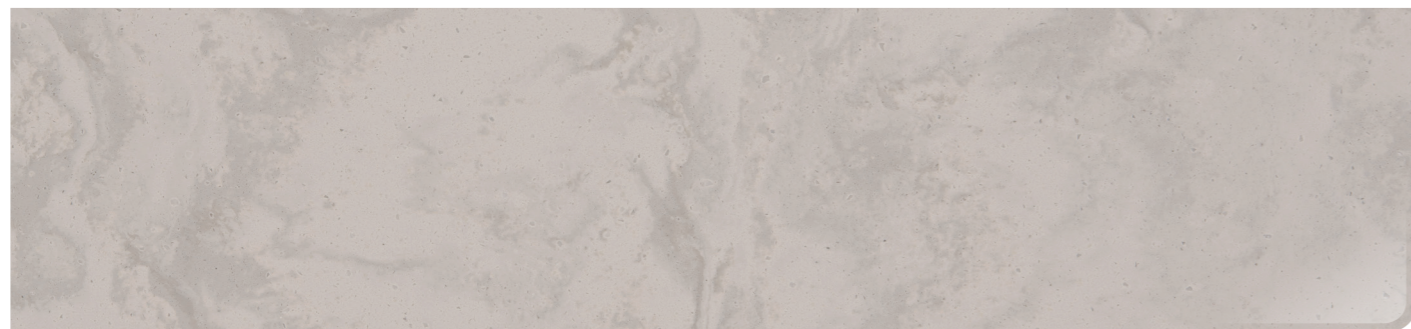
Supreme™



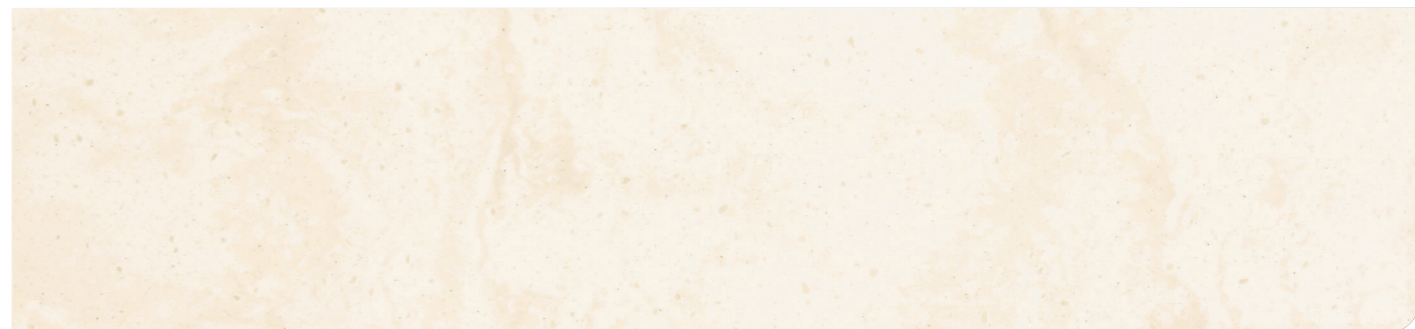
Delphi VD111 ✦



Cloudbank VC118 ✦



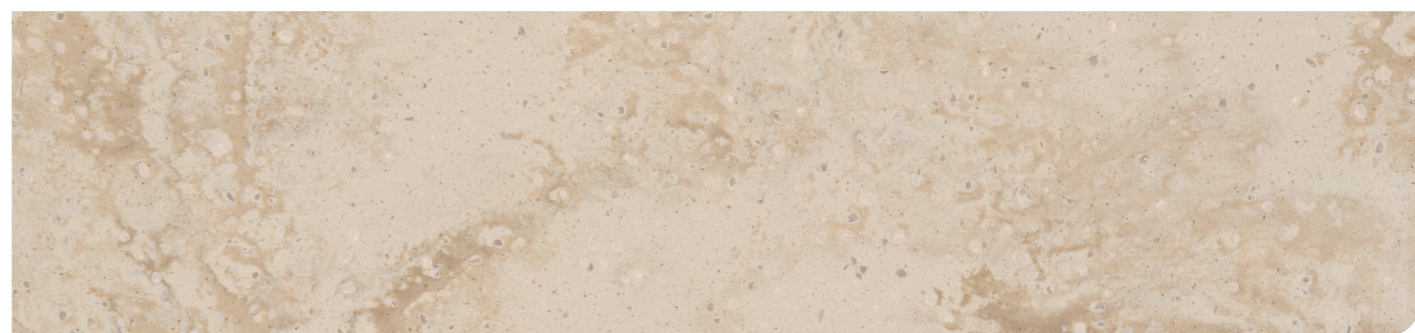
Dawn VD126 ✦



Magnolia VM143 ✦



Natural Bridge VN144 ✦



Dandelion VD175 ✦

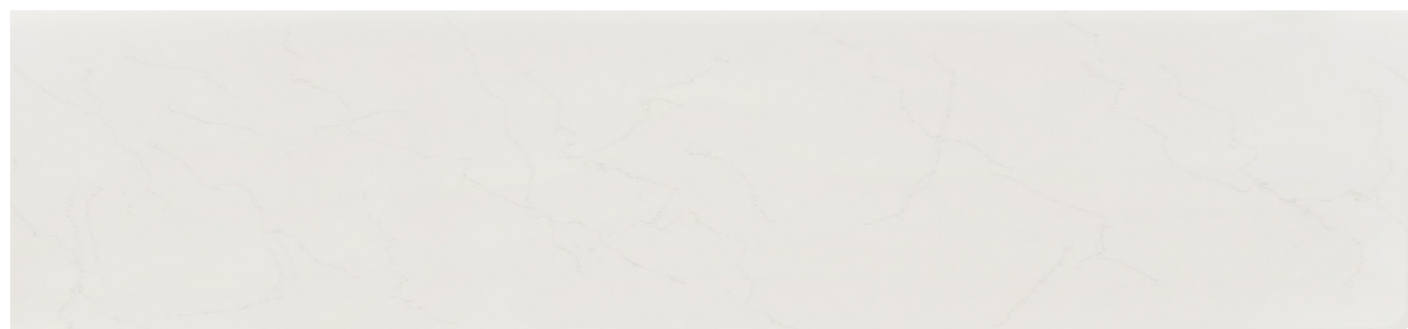


Ocean View VO171 ✦

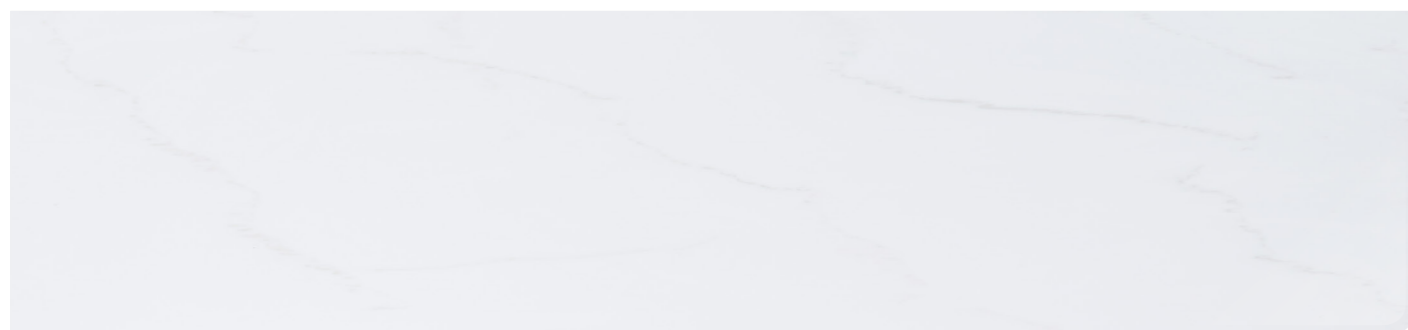


Loam VL155 ✦

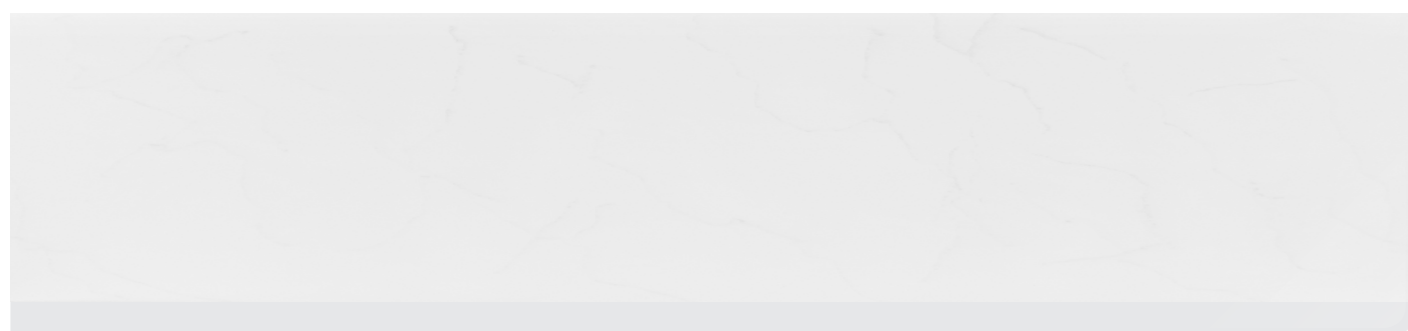
Supreme™



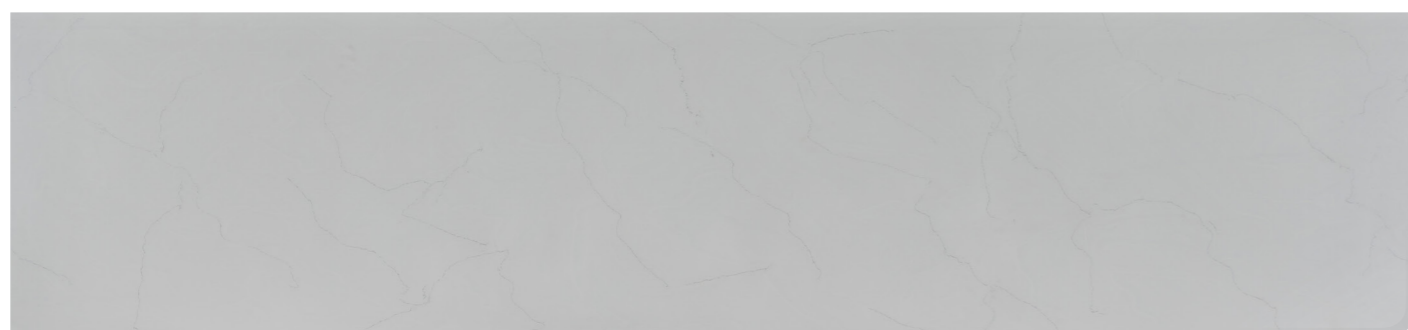
Beige Granite VB172 ❖ NEU



Cotton White VC110 ❖ NEU



Morning Sky VM114 ❖ NEU



Urban Grey VU127 ❖ NEU

SOLID

Quasar White ❖ SQ019	Dazzling White ❖ SD001	Pure White ❖ SP016	Bright White ❖ BW010	Pearl ❖ SP011	Natural ❖ SV041
Tusk ❖ ST015	Ivory ❖ SI040	Oasis ❖ SO064	Cool Mint ❖ SC063	Placid ❖ SP062	Mist ❖ SM022
Fog ❖ SF020	Bliss ❖❖ SB022	Serene ❖❖ SS023	Steel ❖❖ ST023	Iris ❖ SI056	Onyx ❖❖ ON095
Sunflower(N) ❖❖ SS042	California Poppy(N) ❖❖ SC052	Univers(N) ❖❖ SU053			

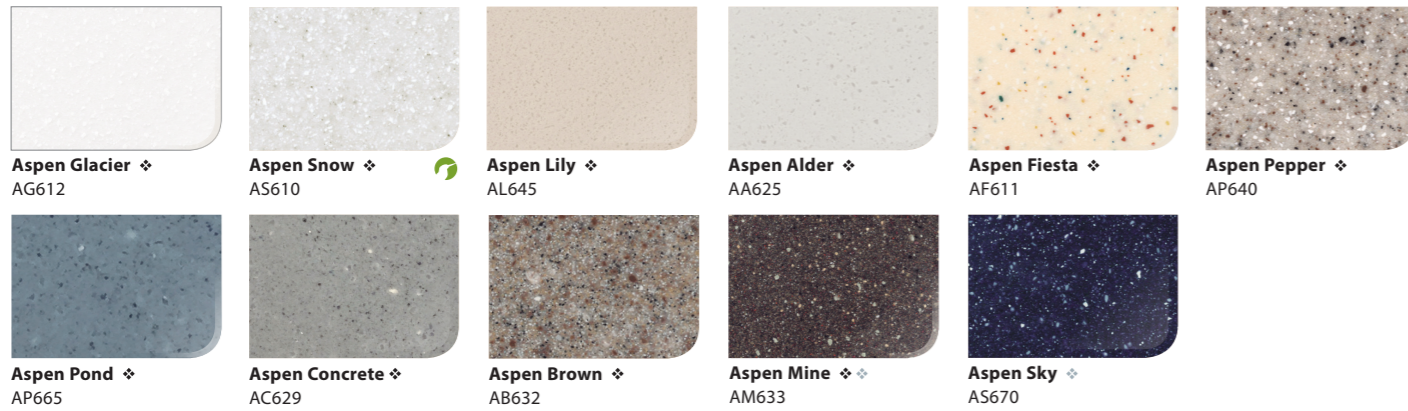
SANDED

Sanded Icicle ❖ SI414	Sanded White Pepper ❖ WP410	Sanded Birch ❖ SB412	Sanded Cream ❖ SM421	Sanded Sahara ❖ SS440	Sanded Gold Dust ❖ SG441
Sanded Stratus ❖ SS418	Sanded Cornmeal ❖ SC433	Sanded Oatmeal ❖ SO446	Sanded Papyrus ❖ SP474	Sanded Vermillion ❖ SV430	Sanded Meadow ❖ SM465
Sanded Heron ❖ SH428	Sanded Clay ❖❖ SC475	Sanded Mocha ❖❖ SM453	Sanded Dark Nebula ❖❖ DN421	Sanded Chestnut ❖❖ SC457	Sanded Tundra ❖❖ ST482

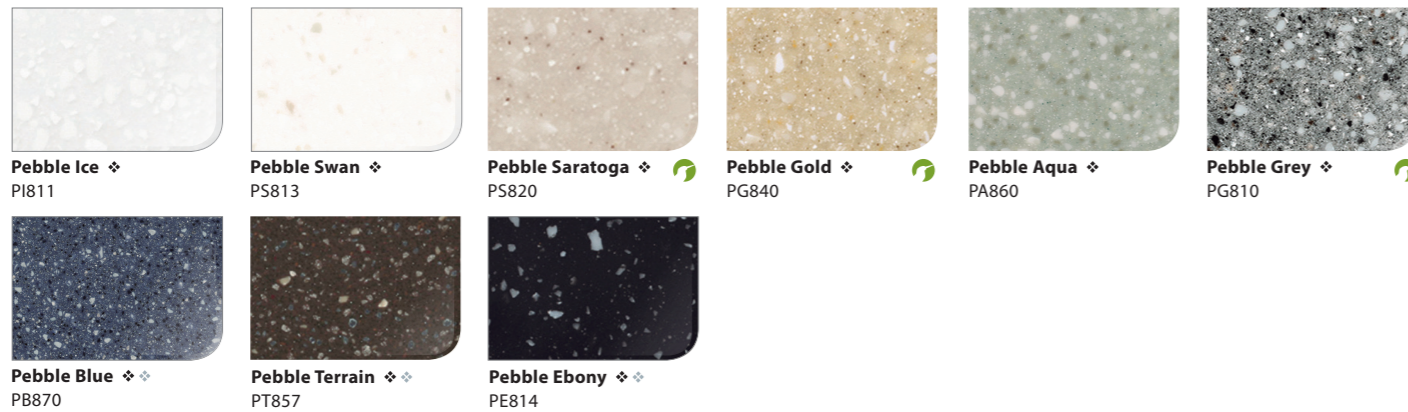
SANDED



ASPEN



PEBBLE



STARON®, an environmentally friendly material

Individual colours available depending on specific order quantities.
 Availability may differ depending on colour and size.
 The printed colours may differ from the sample.
 Please consult the original sample for colour selection.

- STARON® colours with recycled materials
- Available in Rotterdam
- High-maintenance

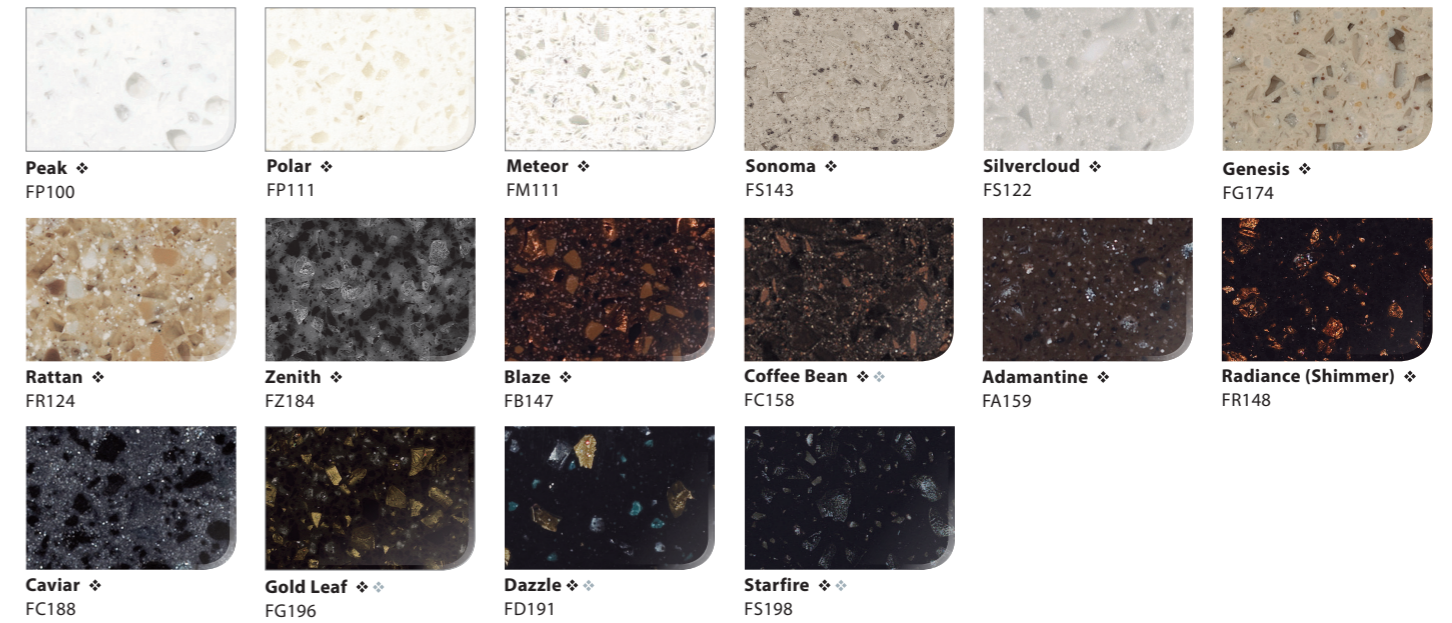
QUARRY



METALLIC



tempest®



PANEL SIZES

DEKORE

Solid, Sanded,
Aspen, Metallic,
Pebble, Quarry,
Tempest, Supreme



THICKNESS	WIDTH	LENGTH
mm	mm	mm
12	760	3.680

- White panels with a width of 930 mm are available in thicknesses of 6, 9 mm and 12 mm.
- White panels with a width of 1350 mm are available in thicknesses of 12 mm.
- Panel thicknesses of 9 mm and 19 mm available on request.
- High-maintenance decor themes and panel thicknesses of 6 mm are not recommended for horizontal surfaces subject to harsh environments/stress.

DEKORE

Solid, Sanded,
Aspen

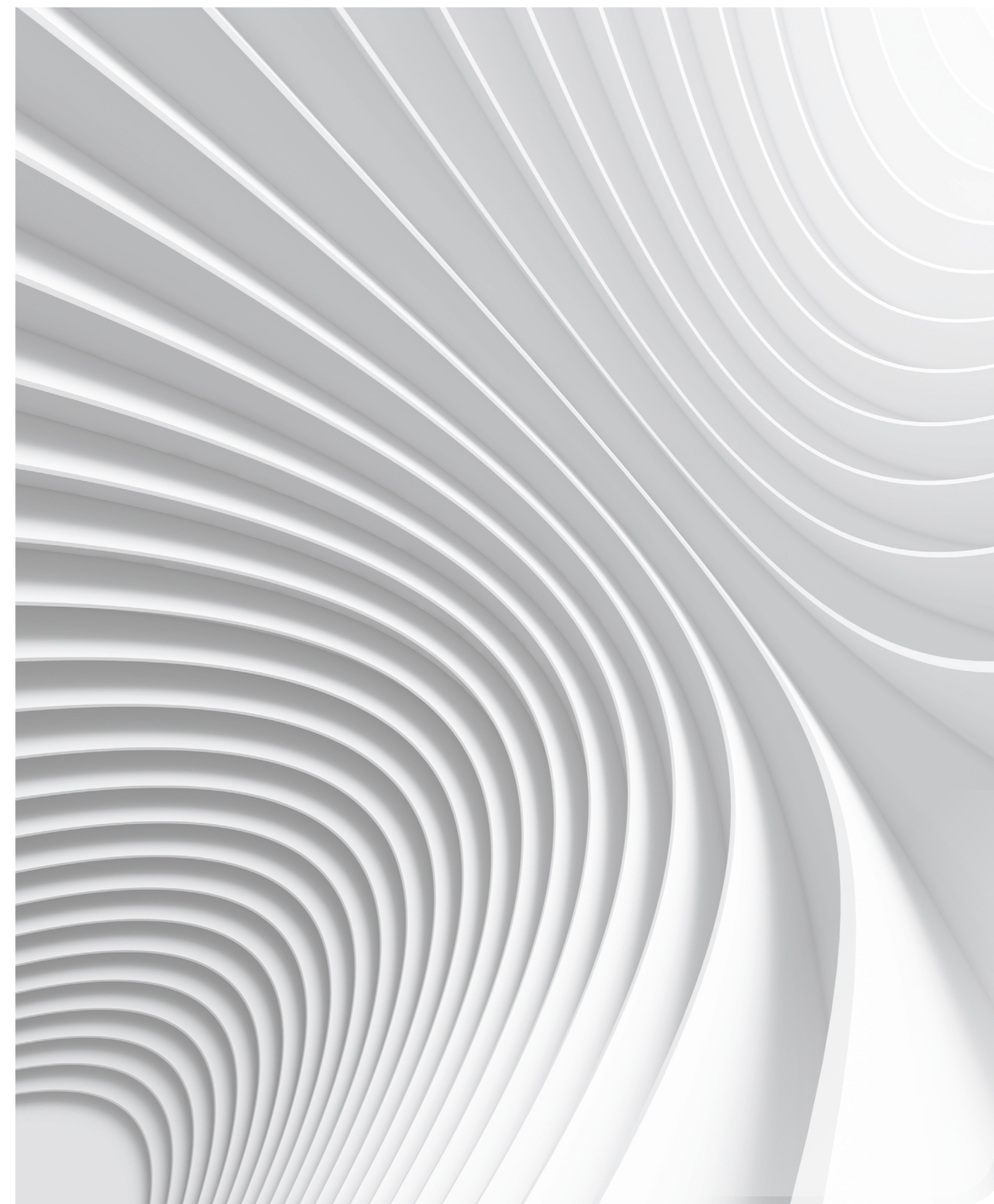


THICKNESS	WIDTH	LENGTH
mm	mm	mm
6	760	2.500

STARON® 10-YEAR LIMITED WARRANTY

LOTTE ADVANCED MATERIALS EUROPE ('LOTTE') grants the owner a limited 10-year warranty on any STARON® installation constructed in accordance with LOTTE approved processing and application guidelines. For more information about the terms and conditions, please consult our website www.staron.com.

TREATMENT AND CARE



TREATMENT

Due to the advantages of STARON® joiners and carpenters can easily work the material with woodwork tools. Apart from sawing, milling, drilling, gluing and grinding, Staron can also be formed thermally. The following instructions are the basis for optimal processing in accordance with the client's wishes.

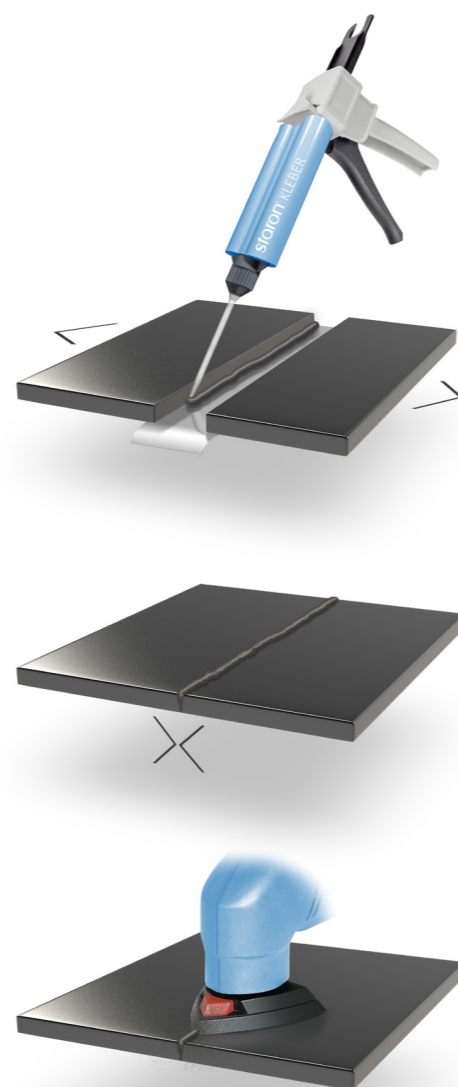
COMBINING WITH OTHER MATERIALS

Please use permanently elastic industrial glue to combine the product with other materials. When doing this, it is important to take into account the expansion coefficient of each specific material. Alternatively, screw connections with plastic dowels or undercut anchors can be used.



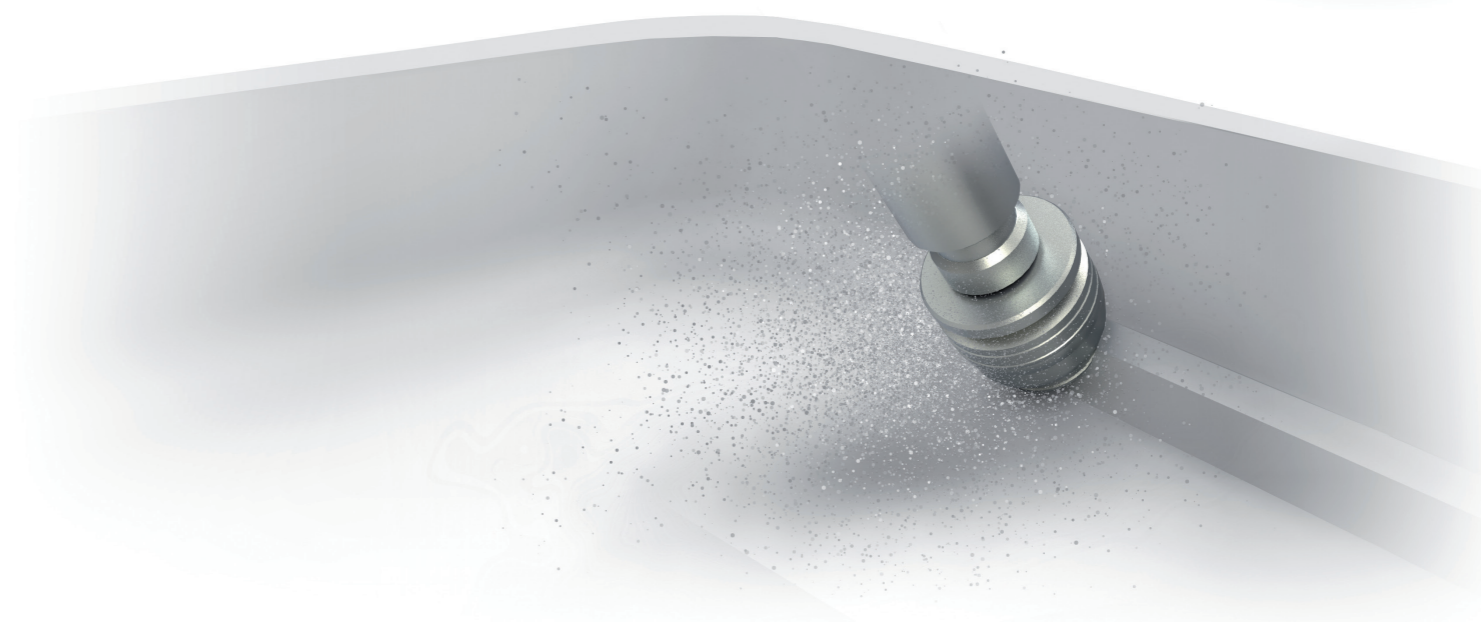
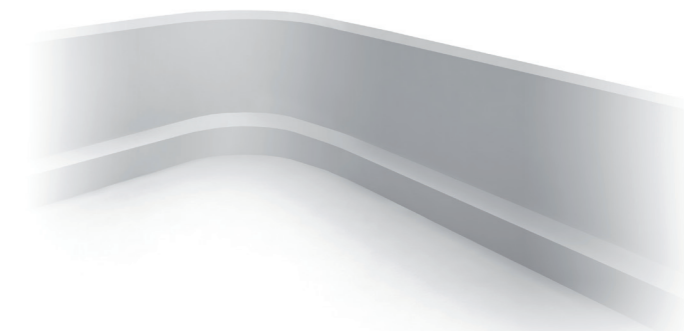
GLUING

STARON® panels are glued with a two-component adhesive that matches the colour of the panel. After the adhesive residues have been removed and the surface has been polished, the glue joints are almost invisible.



WALL CONNECTION PROFILES

The use of a hollow profile is recommended to obtain an optimal, joint-free wall connection profile. The best way to achieve this is to join the STARON® groove panel elements with STARON® glue. Next, smooth out the radius (e.g. 12.5 mm) with a groove milling tool.



EXPANSION

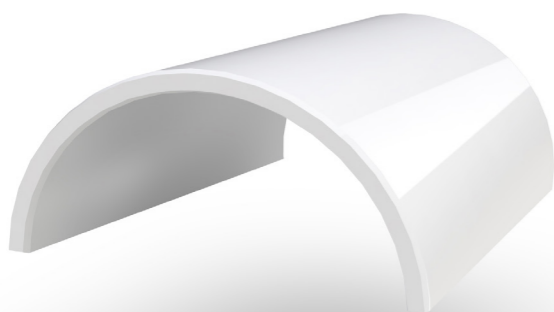
Left: The material specific expansion coefficient of $35.0 \times 10^{-6}/K$ (corresponding to 1 mm per metre at a temperature difference ΔT of $30^\circ C$) must be taken into account for all applications.

FORMING

STARON® panels can be formed at 170°C, via either a vacuum or press process. The forming radii depend on material thickness and colour.

PANEL COLOUR	PANEL THICKNESS IN MM	RADIUS IN MM
Solid, Sanded	6	25
Solid, Sanded	12	76
Aspen, Pebble	12	127
Quarry, Metallic	12	203
Supreme	12	126

Tempest and Quarry colours are conditionally malleable. If you have any questions, please contact your STARON® Customer Services team.



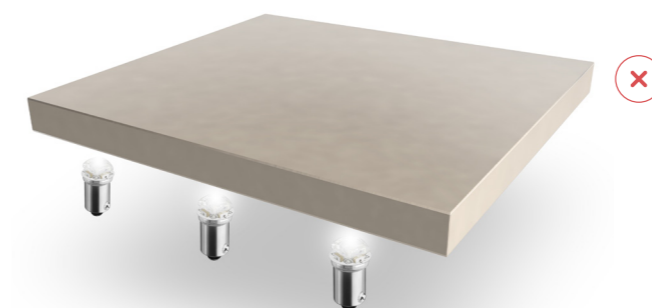
CONFIGURATION OPTIONS

Backlighting, sublimation printing and inlays are optionally available with STARON®.

BACKLIGHTING

Almost all colours are suitable for partial backlighting of translucent logos or lettering. Full-surface backlighting is possible for certain STARON® colours.

Milling out the STARON® panels creates optimal surfaces for LED backlighting for logos or design elements.



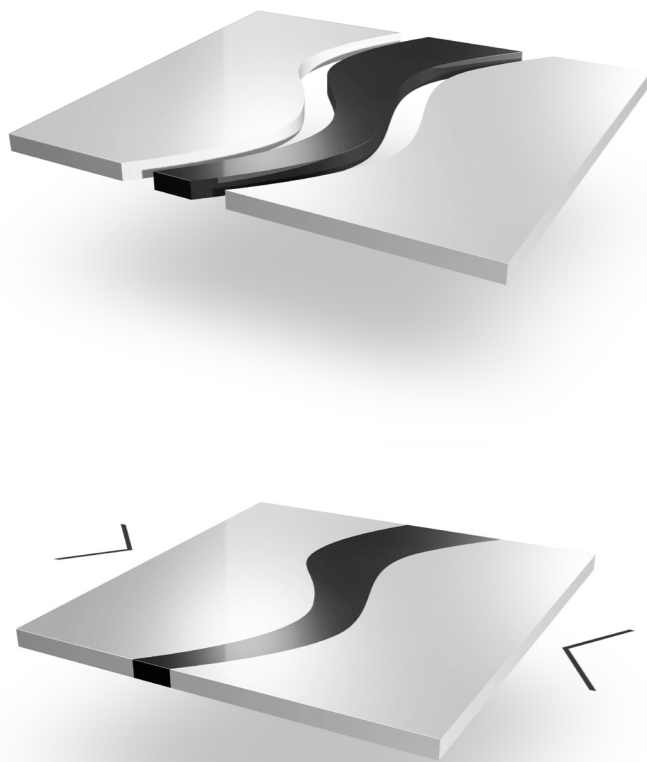
SUBLIMATION PRINTING

In a sublimation print process, images or colour pigments are pressed via heated paper foil onto the surface of the heated STARON® panel. The colour pigments remain abrasion-proof in the lower layer of the material, just like with tattooing.



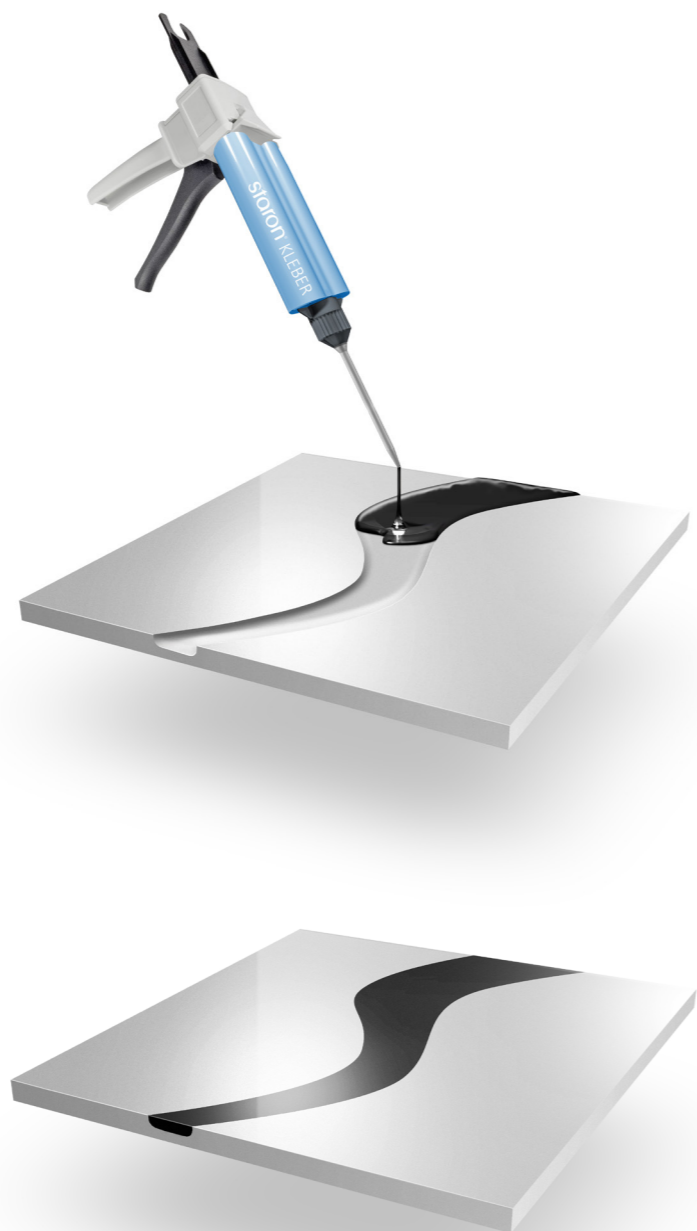
INLAYS

After the milling process, different colour STARON® veins are glued together. The colour structures are retained and complement each other.



CASTING INLAYS

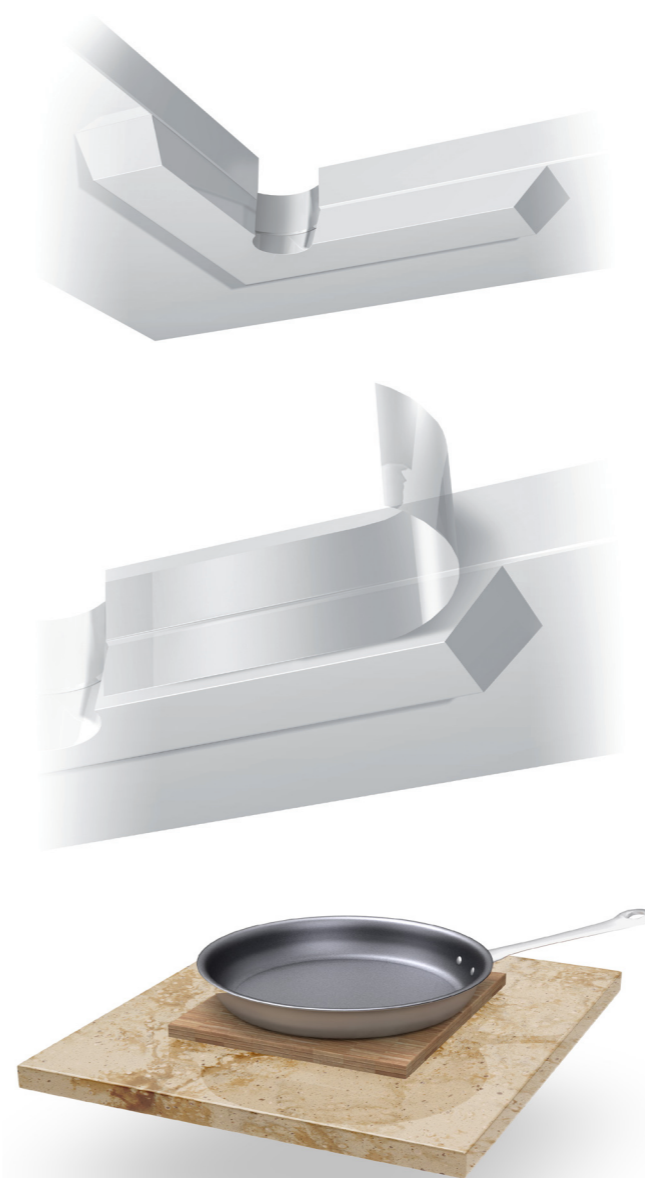
For smaller inlays, fill up the grooves in the panels with STARON® adhesive in the desired colour and grind off flush.



INTEGRATED HOBS

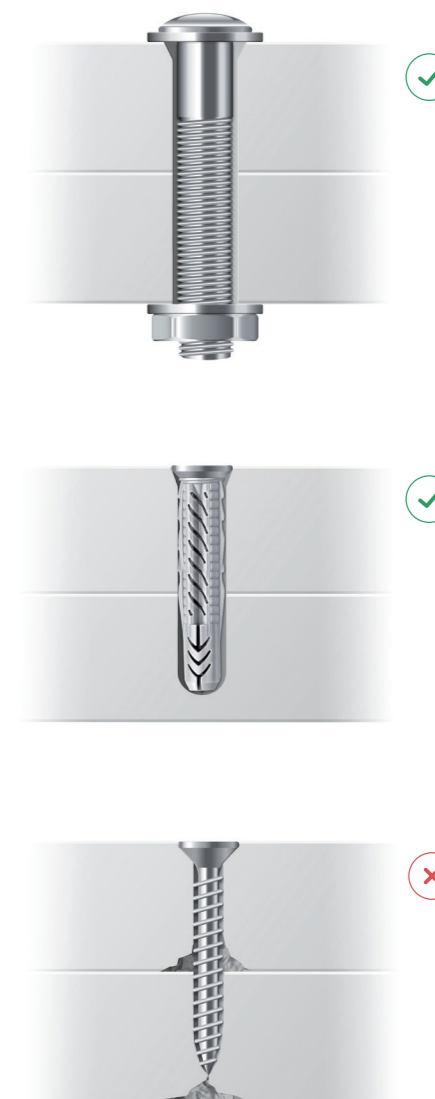
Please pay attention to the following when integrating hobs into STARON® panels:

- Shape the inner corners with tapered radius
- Reinforce the inner corners and cut-out areas with STARON® panel elements
- Mask the panel edges with heat-protection tape
- The use of a heat-resistant support is recommended to avoid heat congestion caused by hot pans etc.



SCREW FITTING

STARON® panels should never be screwed on directly or with self-tapping screws. Please use plastic dowels where possible. Alternatively, you can use penetrating screws or undercut anchors.



SURFACE FINISHES

MATT FINISH

Matt finish is the standard finish for surfaces subject to harsh environments or strain.



SATIN FINISH

Satin finish has a high lustre and requires more care.



GLOSS FINISH

Gloss finish has a reflective gloss and requires, depending on use, more intensive care than matt or satin finishes, especially for darker colours. It is recommended to only use gloss finish for vertical areas.



PRODUCT CERTIFICATIONS

TECHNOLOGICAL PROPERTIES

TESTS	STANDARDS	RESULTS	REQUIREMENTS
Bending strength σ_{fm}		64.5 MPa	
Bending E-module E_f	EN ISO 178	9030 MPa	
Deflection		0.83%	
Pressure resistance σ_{dm}	EN ISO 604	181 MPa	
Tensile strength	ASTM D 638	6000psi	
Density	ISO 1183	1.74 g/cm ³	
Material Weight		20.88KG / D=12.2mm	
Surface hardness	EN 101	2 – 3	
Resistance against large bullet	DIN EN 438-2	1800 mm 12.2 mm material 700 mm 6 mm material	1300 mm 700 mm
Resistance against small bullet	DIN EN 438-2	> 25 N 6.1 and 12.2 mm	
Abrasion resistance	ISO 4586 p6	Weight loss established	
Resistance against 180°C dry heat	ISO 19712/12.2	3	3
Resistance against wet heat	EN ISO 19712-2	5	
Resistance against temperature changes	EN ISO 19712-2	Section 4, passed	
Steam resistance	ISO 4586	3	
Resistance against boiling	ISO 4586	p7	
Change in weight		0.16	
Change in thickness		0.013 mm	
Load test	EN ISO 19712-2	No cracks / 0.10mm	
Resistance against cigarette burns	EN ISO 19712-2	3	
Surface changes		5	
El. transit resistance	EN 61340-5-1	960 x 10 ⁹ Ω	
El. surface resistance	EN 61340-4-1	1 x 10 ¹² Ω	
Thermal expansion	ASTM D696	3.6 x 10 ⁻⁵ m/m	
Water absorption	ASTM D570	0.04% in 24h	
Light-fastness	DIN EN 438-2	Grey standard > 4 Blue wool scale > 6	Blue wool scale = 5
Microbiology	DIN EN ISO 846 Part A & C		
Chemical resistance	DIN EN ISO 19712-2	Method A	
Slip resistance	DIN 51130 DIN 51097	R 10 C	
Fire protection	DIN 4102-1	B1	
Fire protection	DIN EN 13501-1	B-s1, d0	
Fire protection	DIN EN 4554-2	R1 / HL3	
Facade authorisation	ETA – 16/0091	Fastening with KEIL undercut anchor	

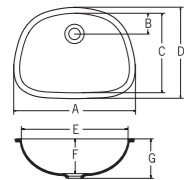
Certificates, test results and information about the properties of Staron® and Tempest in particular, can be obtained upon request from STARON® Customer Services.

SINK & BOWL

ADA COMPLIANT

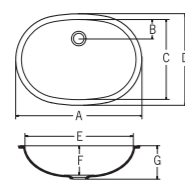
LAVATORY SINKS / BASINS

A3201



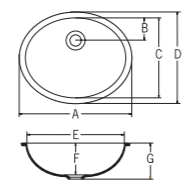
- A 20-3/8" (517mm)
- B 3-3/8" (86mm)
- C 13-5/8" (346mm)
- D 15-3/16" (386mm)
- E 18-13/16" (477mm)
- F 5-1/2" (140mm)
- G 6-3/16" (157mm)

A3211



- A 21-9/16" (548mm)
- B 3-3/8" (86mm)
- C 14" (356mm)
- D 15-9/16" (396mm)
- E 20" (508mm)
- F 6-1/8" (156mm)
- G 6-13/16" (173mm)

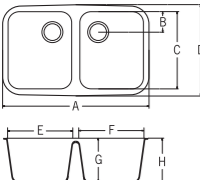
A3181



- A 18-3/16" (462mm)
- B 3-11/16" (94mm)
- C 13-1/4" (336mm)
- D 14-13/16" (376mm)
- E 16-5/8" (422mm)
- F 5-1/2" (139mm)
- G 6-1/8" (156mm)

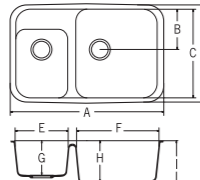
KITCHEN / UTILITY SINKS

A2311



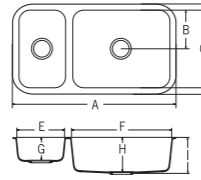
- A 31-1/4" (794mm)
- B 4-15/16" (110mm)
- C 16-9/16" (421mm)
- D 18-15/16" (481mm)
- E 13-11/16" (348mm)
- F 13-11/16" (348mm)
- G 9-1/4" (235mm)
- H 9-13/16" (250mm)

A2321



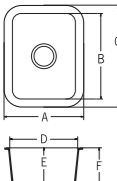
- A 32-13/16" (834mm)
- B 8-13/16" (244mm)
- C 19-1/4" (488mm)
- D 21-9/16" (548mm)
- E 11-5/16" (287mm)
- F 17-9/16" (446mm)
- G 7-1/2" (191mm)
- H 9" (229mm)
- I 9-5/8" (244mm)

A2341



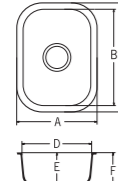
- A 34-7/8" (886mm)
- B 8-3/8" (213mm)
- C 16-3/4" (426mm)
- D 19-1/8" (486mm)
- E 10" (254mm)
- F 21" (533mm)
- G 5" (127mm)
- H 7-1/2" (191mm)
- I 8-1/16" (206mm)

A1121



- A 12-13/16" (326mm)
- B 14" (356mm)
- C 16-3/8" (416mm)
- D 10-3/8" (266mm)
- E 6-1/2" (165mm)
- F 7-1/16" (180mm)

A1131



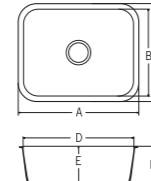
- A 13-7/16" (341mm)
- B 15-3/4" (400mm)
- C 18-1/8" (460mm)
- D 11-1/16" (281mm)
- E 5-1/4" (133mm)
- F 5-7/8" (148mm)

A1181



- A 18-1/8" (460mm)
- B 15-3/4" (400mm)
- C 18-1/8" (460mm)
- D 15-3/4" (400mm)
- E 8-3/16" (208mm)
- F 8-7/8" (225mm)

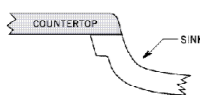
A1231



- A 23-5/16" (592mm)
- B 16-5/8" (422mm)
- C 19" (482mm)
- D 20-15/16" (532mm)
- E 7-3/8" (187mm)
- F 7-15/16" (202mm)

MOUNTING OPTIONS

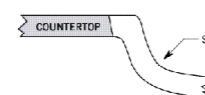
Seam mount



Under mount



Angled mount



• Sink & Bowls internal specifications are noted below.

• LOTTE ADVANCED MATERIALS does not guarantee the colour match of Sink & Bowls and sheets.

• Staron Sink & Bowls are at best implemented in a product of these three colours:

COLOUR OPTIONS



DESIGN OPTION

An integral sink will improve the efficiency and hygienic qualities of a kitchen or bath area and, particularly, interior commercial applications. Staron all-acrylic sinks and bowls are installed in combination with Staron sheet materials as part of a continuous surface featuring imperceptible seams for a perfect, uninterrupted fit. That also means there are no gaps or crevices for bacteria or mold to accumulate and grow. Whichever style you choose, Staron's non-porous, hygienic surfaces will always be easy to clean and maintain. Choose from three coordinated sink colour options from a collection of ten, popular models

CARE & MAINTENANCE

STARON® SURFACES

STARON® offers you an easy-care, durable material that can be cleaned, maintained or repaired with little effort. The maintenance effort required for STARON® and its durable flawless surface in general depends on the colour and the selected finish. Brighter colours and matt finishes require less care than dark colours and glossy finishes.

For standard care and maintenance, wipe STARON® surfaces with a damp cloth or sponge on a daily basis.



Small scratches or stubborn stains on surfaces with matt or satin finishes can be removed by making circular movements with a wet sponge and scouring agent. Next, rinse with clear water and dry off with a dry cloth to avoid the creation of stripes.

Do not use abrasive cleaners, scrubbing sponges or wire wool for dark colours and glossy finishes. To avoid dulling down the gloss, only use a mild cleaner without abrasive and a soft cloth.

INSTRUCTIONS

Please adhere to the following instructions in case of damage, dirt or stains:

- Never put hot pots or pans on STARON® surfaces. To avoid heat congestion, always use heat-resistant supports or coasters with soft feet.
- Do not expose STARON® surfaces to aggressive chemicals or corrosive substances. Rinse immediately after contact.
- Do not leave staining foodstuffs or remains on the surfaces. Rinse immediately after contact.
- Avoid cutting on STARON® surfaces, always use a cutting board.

Your joiner-carpenter can repair deeper scratches or stubborn stains by grinding them down.



Disclaimer

The contents of this brochure have been prepared by the manufacturer with the utmost care. The contents are updated regularly and in a timely manner. Nevertheless, it cannot be excluded that the brochure might contain mistakes. Despite careful verification, the manufacturer cannot assume unlimited legal liability for the accuracy, completeness and up-to-dateness of this brochure. The manufacturer in particular does not assume liability regarding any damages or consequences resulting from the use of the contents provided.

LOTTE WORLD TOWER



LOTTE

LOTTE is a worldwide Korean company. Founded 50 years ago in Seoul, South Korea, the company has successfully developed through acquisitions and partnerships – especially in Japan and other Asian countries – to become a world leader in the chemical, construction, tourism, retail, finances and food industries.

Since LOTTE acquired the Samsung chemical business in May 2016, the newly founded LOTTE ADVANCED MATERIALS company including its STARON® solid surface material and Radianz quartz are also part of the business. LOTTE ADVANCED MATERIALS is further expanding the international distribution network that was developed in the acquisition process.

In Europe, LOTTE ADVANCED MATERIALS EUROPE GmbH in Frankfurt am Main is responsible for STARON® Solid Surfaces sales, marketing and consultancy.

A brand that cannot be overlooked:
With its 555 metres, the LOTTE World Tower in Jamsil-Dong, Seoul, is the highest building in Korea and the 5th highest in the world. The impressive complex surrounding LOTTE World Tower includes a mall, hotels and a theme park.



LOTTE ADVANCED MATERIALS



LOTTE ADVANCED MATERIALS EUROPE GMBH

Kölner Str. 12, 65760 Eschborn, Germany

Tel. +49 (0) 6196-77 272 75

Staron.eu@lottechem.com

www.staron.com

Copyright © 2017 LOTTE ADVANCED MATERIALS Co., Ltd.

